

Cybttec User Manual

V4.0

July 2013



Vehicle and Asset Tracking

Introduction

Cybtec is a powerful **Vehicle Tracking** solution on the Maltese market featuring the latest state of the art technology in GPS/GPRS hardware trackers. Cybtec now offers a highly cost effective solution which helps any business in Malta to control and contain running costs of its vehicle fleet.

Cybtec was designed from the ground up with the demanding Maltese Corporate environment in mind, and therefore the solution delivers far more than a simple dot on a map. We create custom reports and controls that integrate location data that is relevant to your business operation so that such outputs can be used as your business decision tool.

Cybtec, which is very easy to install on your company vehicles, can be hosted on our resilient servers and viewed through a normal internet connection. As an option **Cybtec** can also run on your own in-house servers.

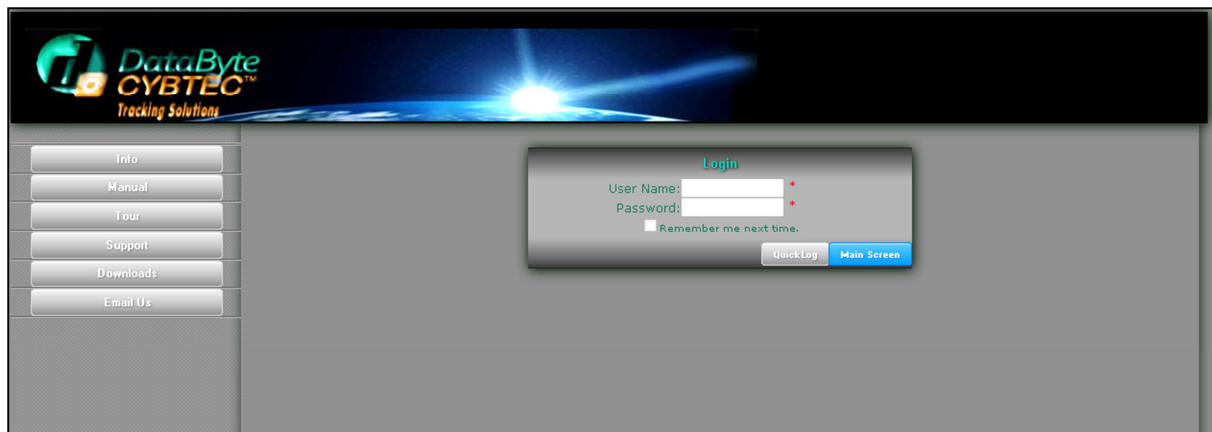
Plan your client routes and control the daily workout plans, monitor your fleet's operational performance, ensure that your clients are visited by your sales force.

These are but a few of the management controls that will be a direct consequence of installing **Cybtec**.

General

The software is a web based solution and as such, there is nothing to install on the client computers. It is tested with Internet explorer v7 or later and Firefox v3 or later internet browsers.

Logging In



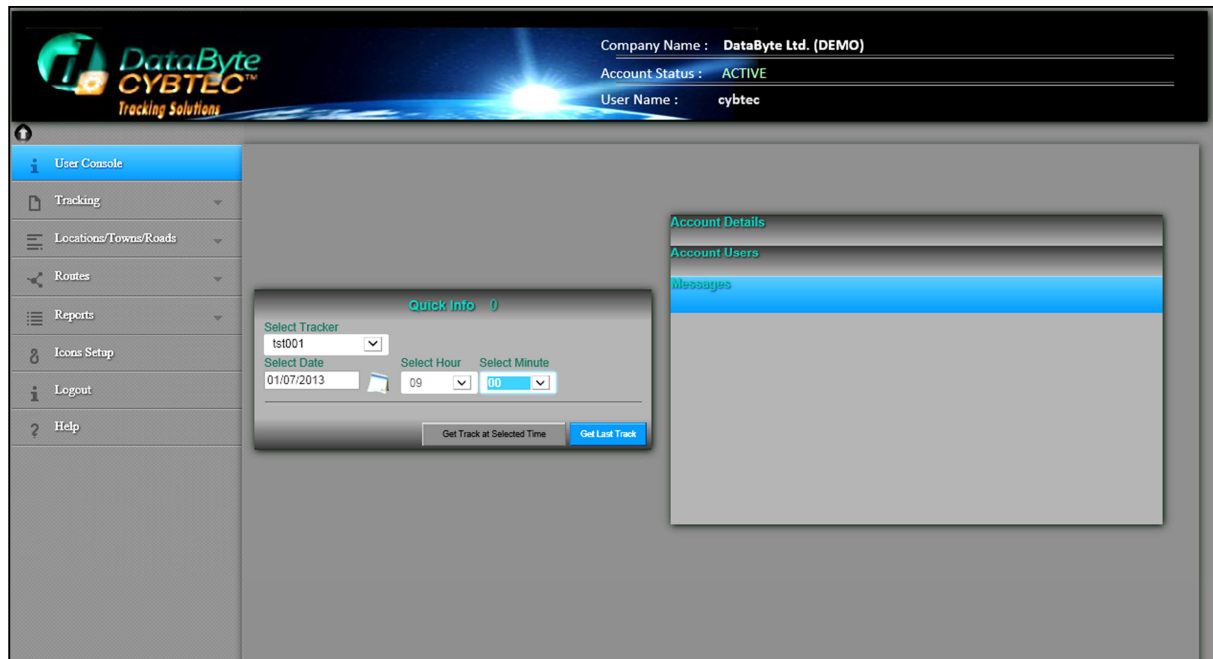
Every user has to enter his credentials in order to log into the system. Usernames and passwords are supplied by Data-Byte on system commissioning and extra users for the same company are issued free of charge. In this way, the fleet can be managed better from the users' end.

Enter Username

Enter Password

Press Main Screen to login the system or QuickLog to access the Tracker Control Panel.

Main Screen- User Console

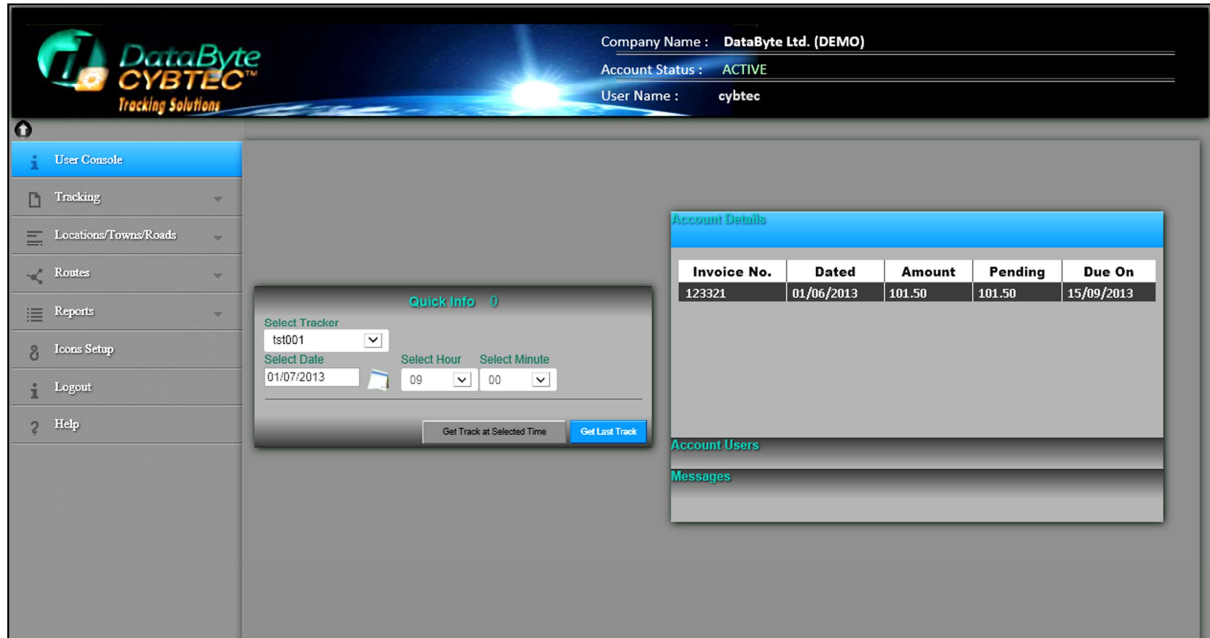


Once the user logs in successfully, the main user screen is displayed.

On the Quick Info Panel, the user can select one of his vehicles, select a date and time, and by pressing the 'Get Track at Selected Time', the position of the tracker at the selected instance will be displayed

If the 'Get Last Track' button is pressed, the location of the last track of the selected vehicle is displayed.

Main Screen- Account Details



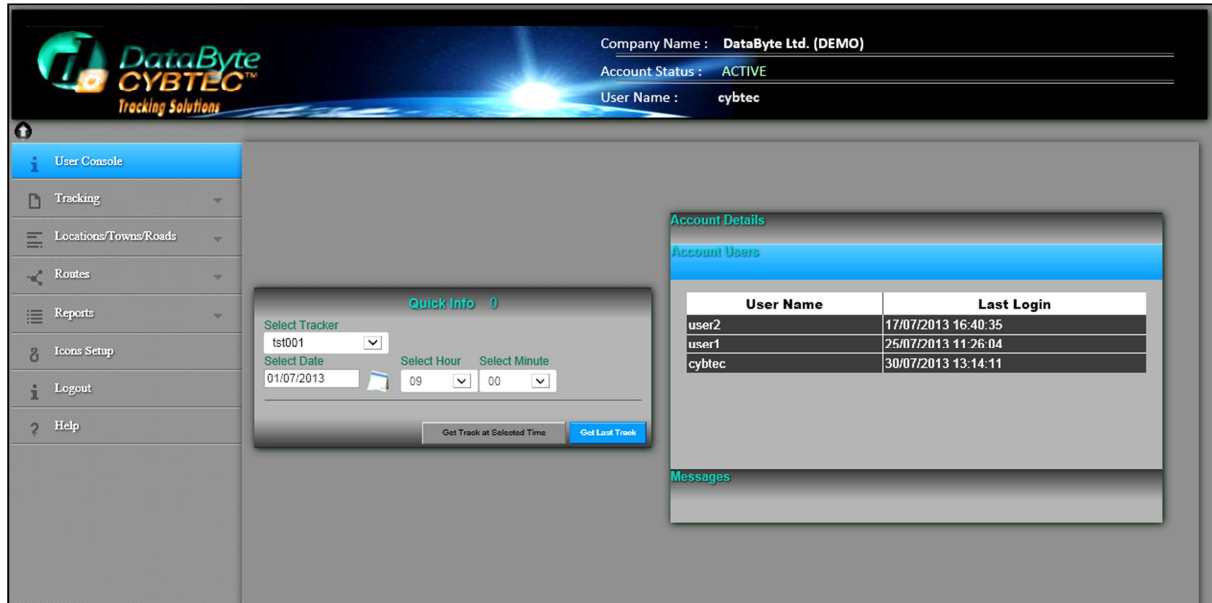
The screenshot displays the 'User Console' interface. At the top, the company name is 'DataByte Ltd. (DEMO)', the account status is 'ACTIVE', and the user name is 'cybtec'. The left sidebar contains navigation links: User Console, Tracking, Locations/Towns/Roads, Routes, Reports, Icons Setup, Logout, and Help. The main content area features a 'Quick Info' section with a 'Select Tracker' dropdown (showing 'ts1001'), a 'Select Date' field (showing '01/07/2013'), and 'Select Hour' (09) and 'Select Minute' (00) dropdowns. Below these are buttons for 'Get Track at Selected Time' and 'Get Last Track'. To the right, the 'Account Details' section displays a table of invoices.

Invoice No.	Dated	Amount	Pending	Due On
123321	01/06/2013	101.50	101.50	15/09/2013

Below the table, there are links for 'Account Users' and 'Messages'.

In the case of term leased licensing between Data-Byte and the client, any pending invoices/payments are directly displayed on this tab if and when available.

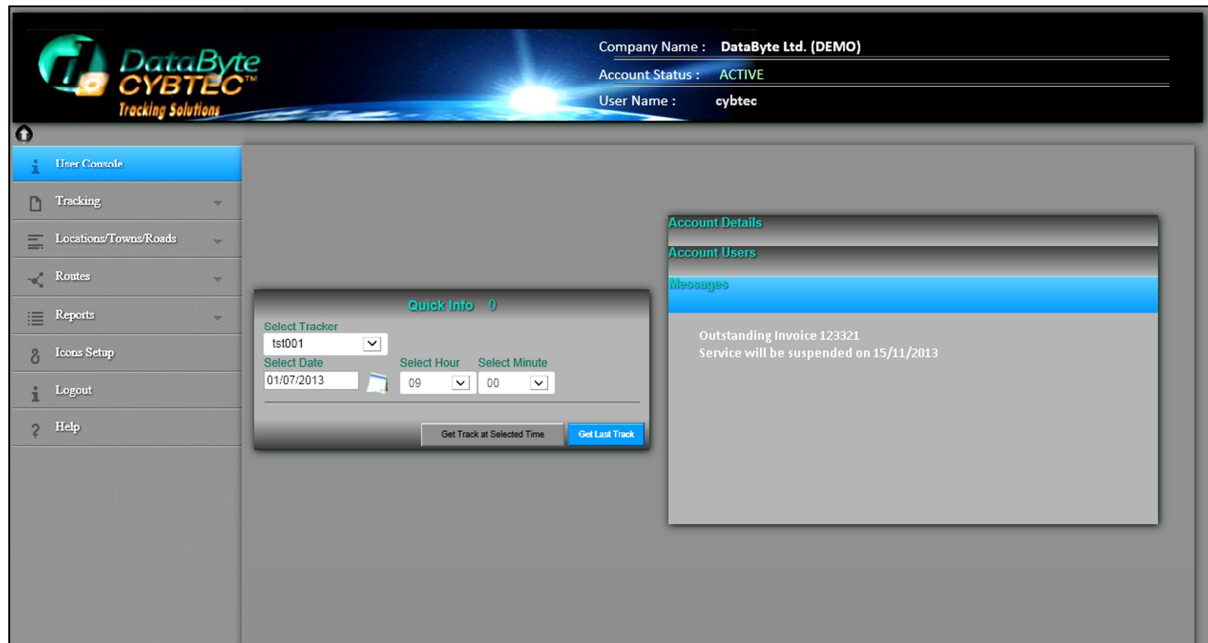
Main Screen- Account Users



User Name	Last Login
user2	17/07/2013 16:40:35
user1	25/07/2013 11:26:04
cybtec	30/07/2013 13:14:11

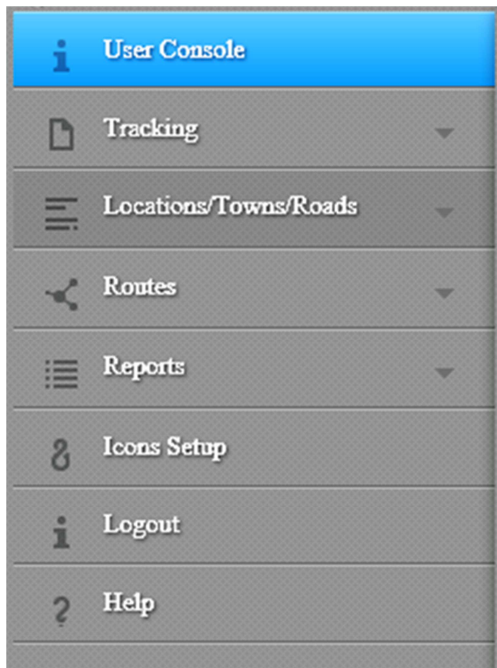
All users belonging to a particular company are listed in this section along with the date when each user last logged into the system.

Main Screen- Messages



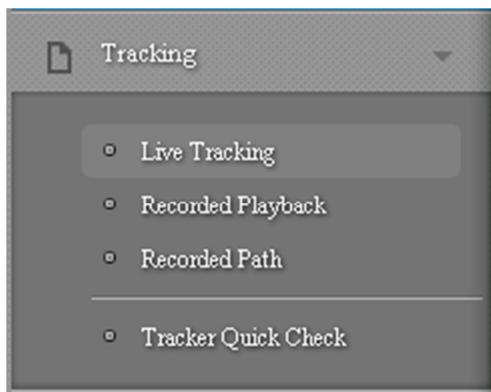
Automated messages regarding any scheduled maintenance and events such as outstanding invoices etc. will be displayed in this tab.

Main Menu



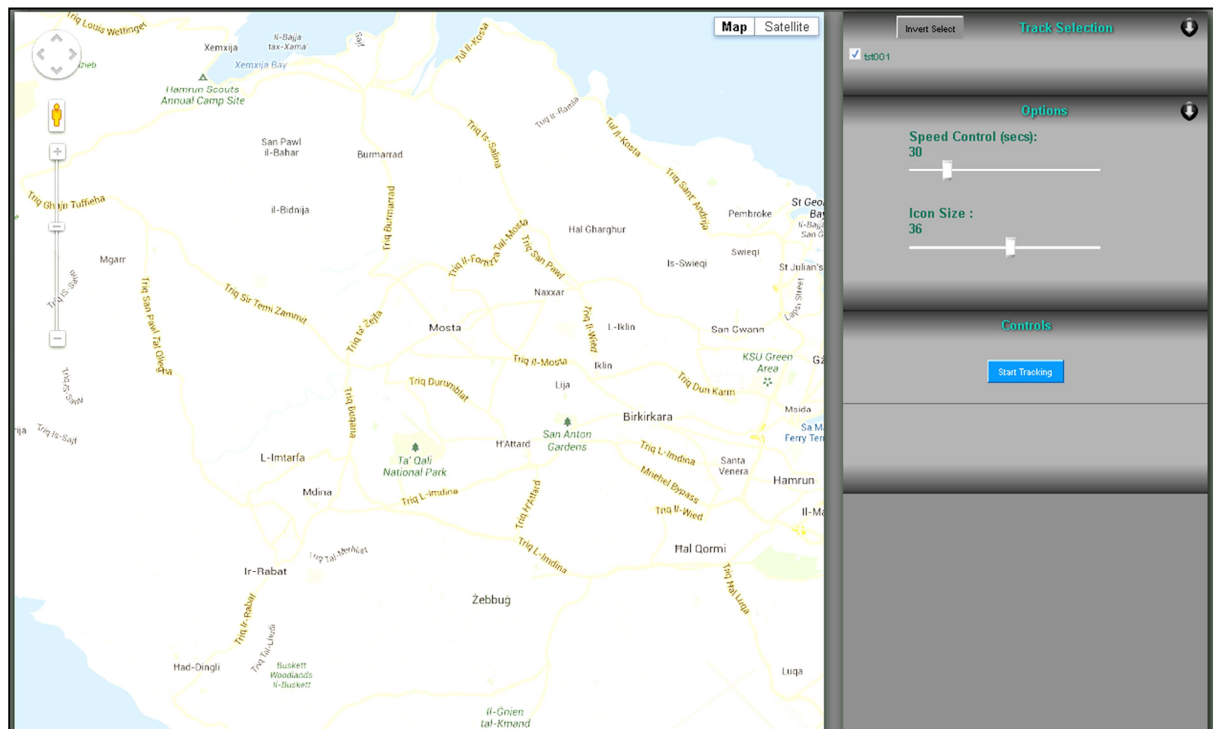
Main Menu is used to navigate through the system according to the main titles as displayed above. A description of each function can be found in this manual.

Menu - Tracking




Live Tracking


Float the mouse over the Tracking Menu item and the submenu as shown above automatically pops into view. Pressing Real Time tracking will get you to the Live Tracking screen.



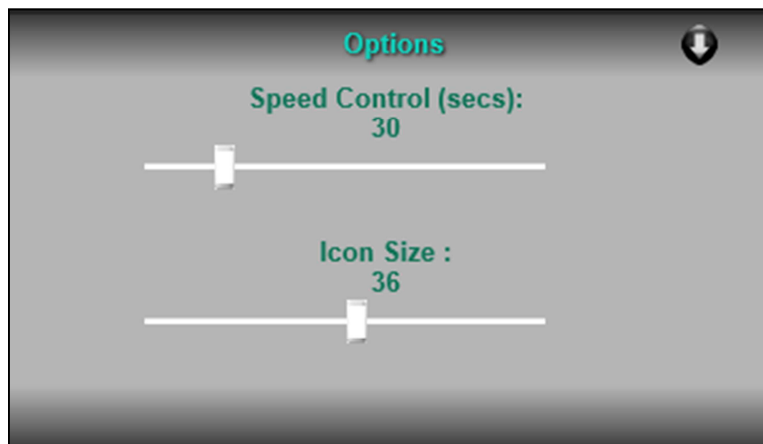
On this screen just select the required vehicle's to be tracked under the Track Selection Heading and then press the 'Start Tracking' button to start tracking the selected vehicle/s in real time. The system has an automated function to locate the position of the vehicle being monitored on the map.

Pressing the 'User Console' button on the upper left hand side of the screen will take you back to the main screen.

Pressing the  button on the top left hand side will hide or show the menu to expand the map area.

Pressing the **Track Selection**  button on the Tab will hide/show the selected/available vehicles.

Expanding the Options Tab will display the Speed Control: This indicates the rate at which the screen will be refreshed and has a minimum setting of 30 seconds.



Basic help is available online when the Help tab is expanded. The help text will be automatically hidden when the mouse is moved over the Tab.

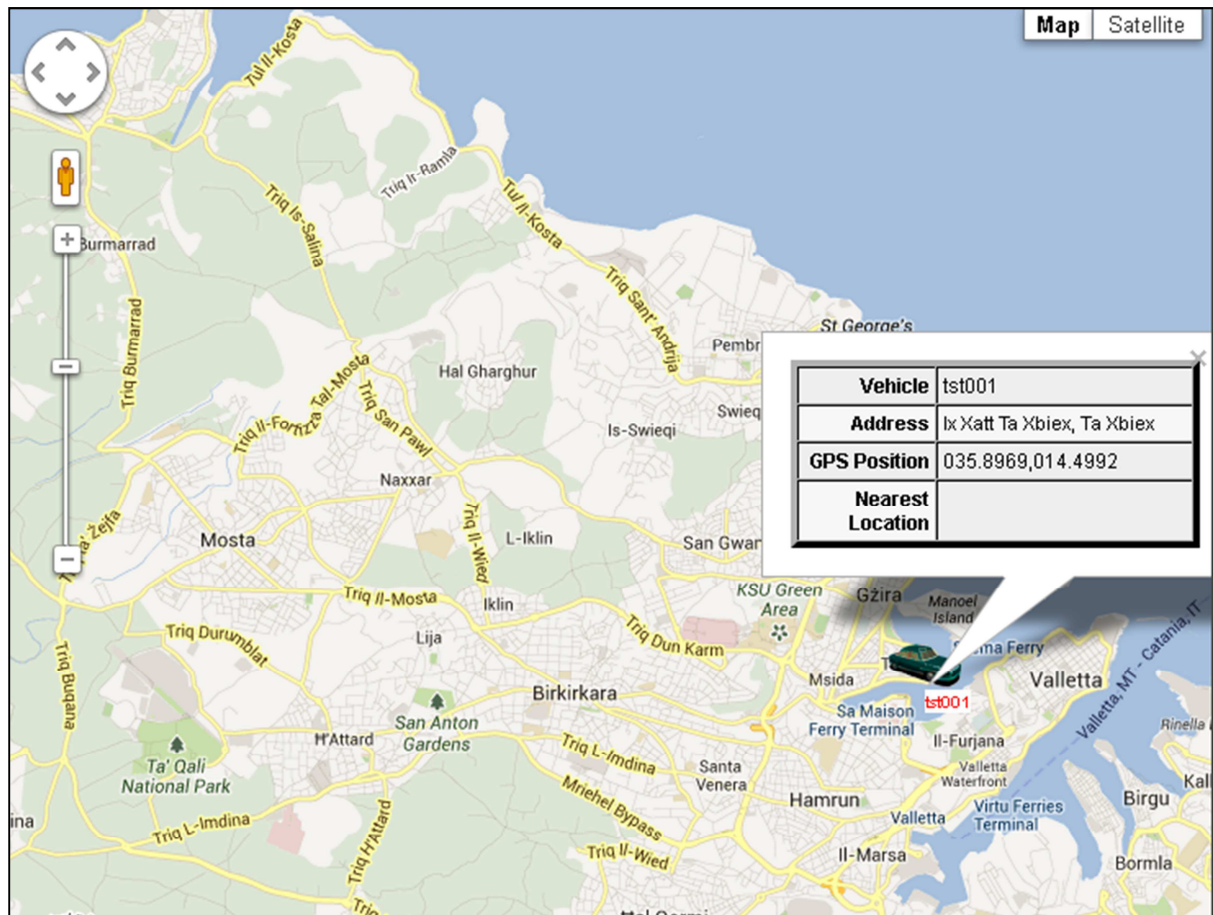
When the vehicle is in tracking mode, the Vehicle Details panel shows information about the track.



To stop the tracking click on 'Stop Tracking' button.

If one of the vehicles being tracked is not within the visible boundaries of the displayed map, a small icon with a red arrow pointing towards the location of the vehicle will be displayed.

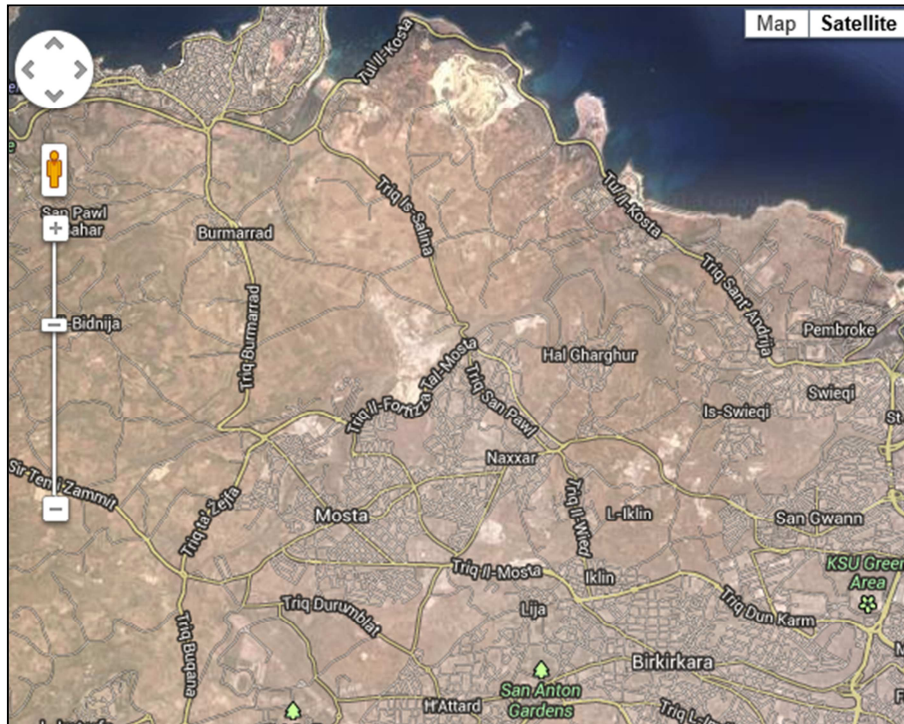
Pressing on the vehicle icon will automatically center the map on the clicked vehicle. Clicking the mouse on the vehicle icon will display additional information about the location of the vehicle.



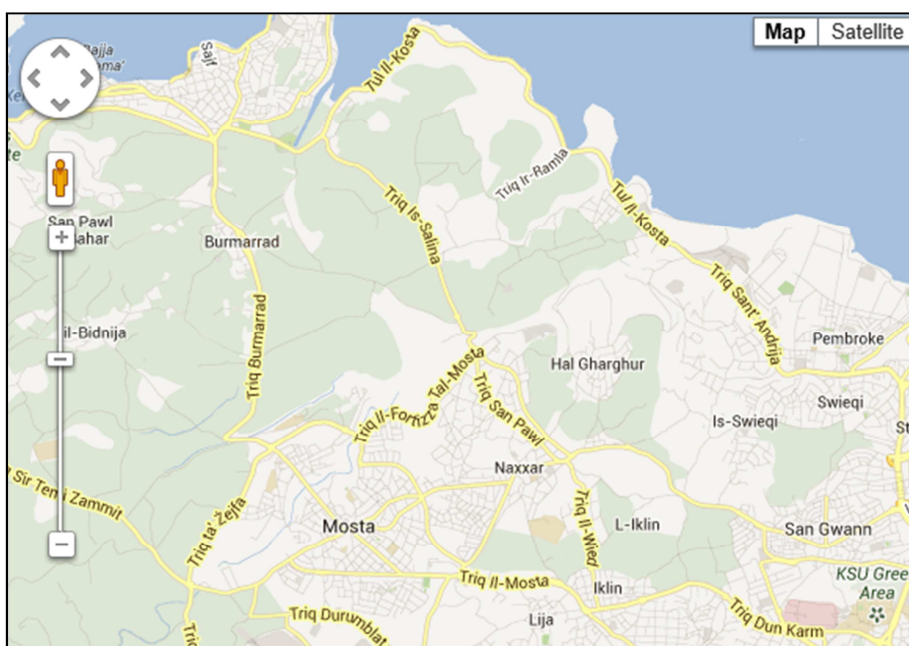
The Info Tab displays Vehicle Number, last time of trace received, current speed from last trace, tracker ID and if stopped, the time the vehicle stopped in this instance.

The map can be changed using the controls on the upper right hand side of the map, namely Map, Satellite or Hybrid.

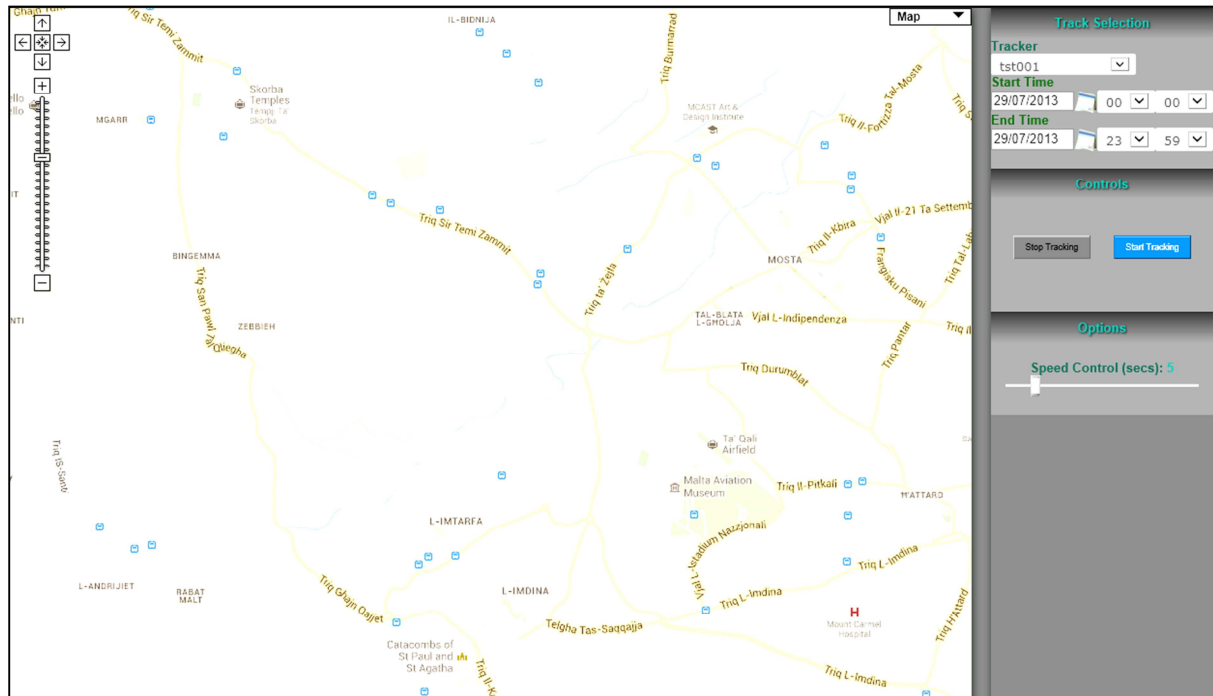
Satellite :



Map :

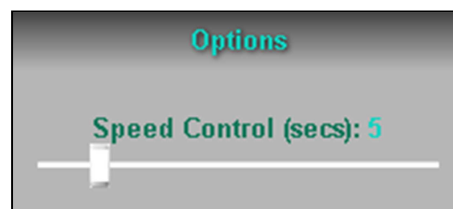


Recording Tracking



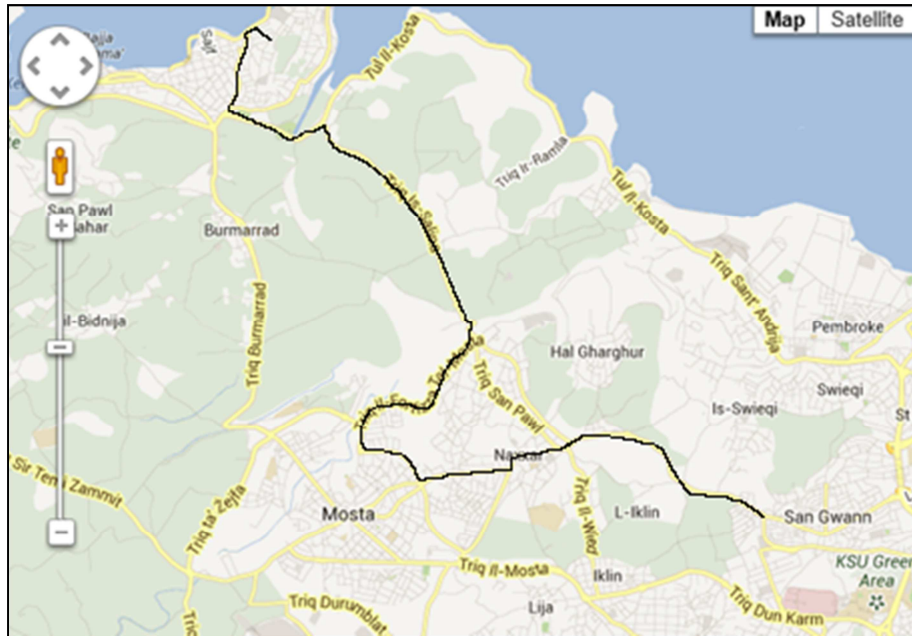
The user can select a particular vehicle in the Tracker List Box under the Track Selection Tab. Then the start and end time can be selected and when the 'Start Tracking' button is pressed, the system will download the selected period data and start displaying every track as if it were a playback of the real time data.

The options section determines the interval every trace is displayed. By default this is set to 5 seconds.



To stop the playback, just press the 'Stop Tracking' button.

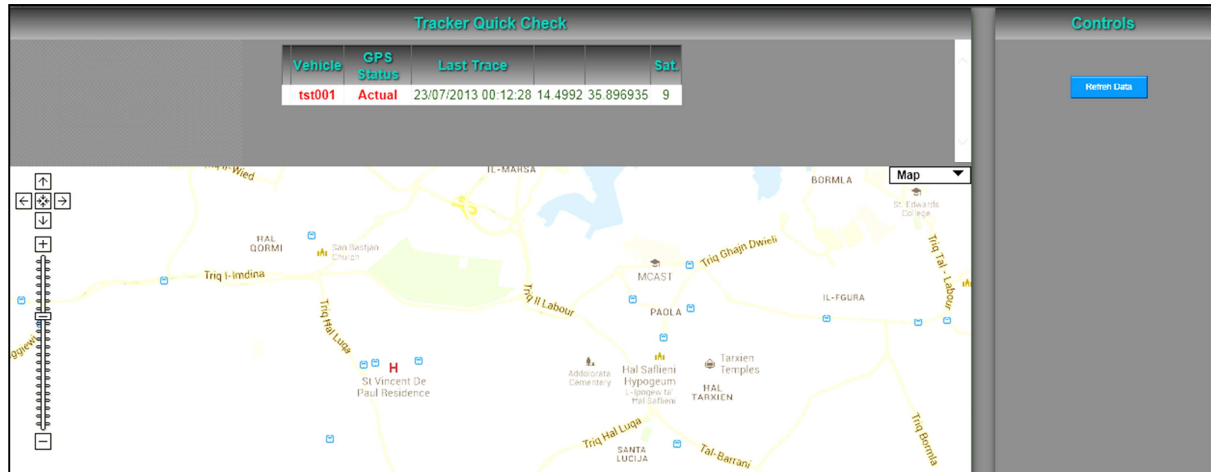
Recorded Route



After selecting the required vehicle and start and end times, pressing the 'Plot Track' button will display the route taken by the particular vehicle in the selected time frame. Every Stop is depicted on the map and chronologically numbered, making it easy for the operator to follow the route taken by the vehicle.

Clicking on the stop icon on the map will display additional information about that stop.

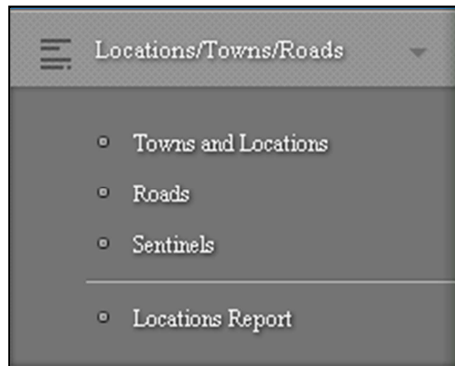
Tracker Quick Check



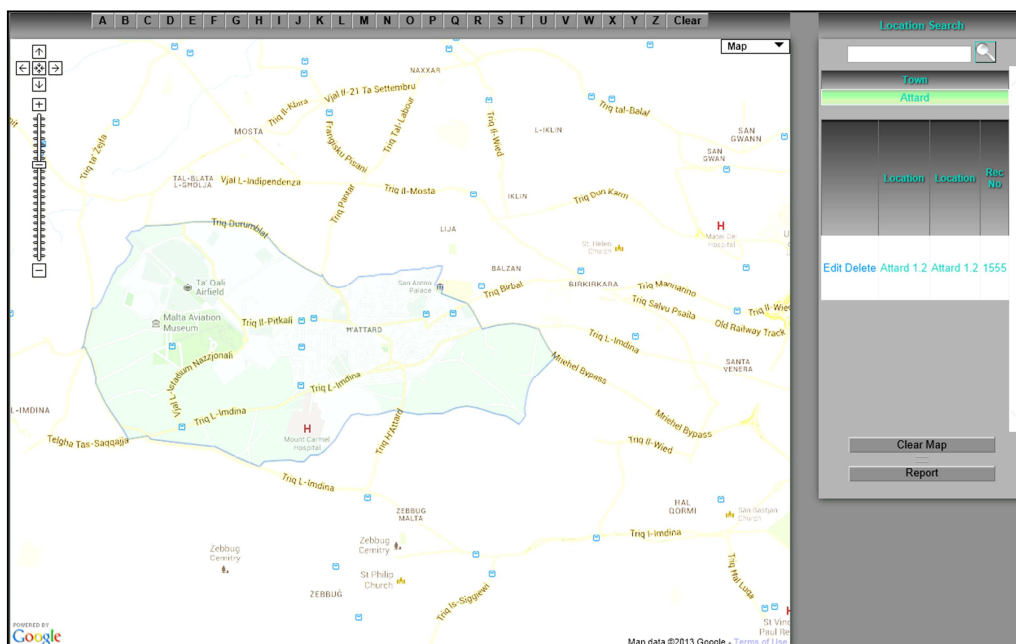
This screen will display a grid (top part of the screen) with all trackers and the last trace from every tracker. Clicking on the underlined tracker name will display its location on the map. The primary use of this screen is to see that all trackers are functioning correctly and transmitting in a timely manner. Vehicles that are not transmitting will be displayed in red.

The 'Refresh Data' button refreshes the data and makes it up to date with the last recorded traces.

Menu – Locations / Towns / Roads



Towns and Locations



In this option the user can input locations (Named Sites) according to his operational requirements. The buttons **A** to **Z**, when pressed, will display all towns beginning with the relevant letter. Clicking on the name of the town on the right portion of the screen, will then display all, if any, location saved under that town. To edit the name of the location press Edit and to delete press delete. Pressing the Underlined name of the location will display it on the map.

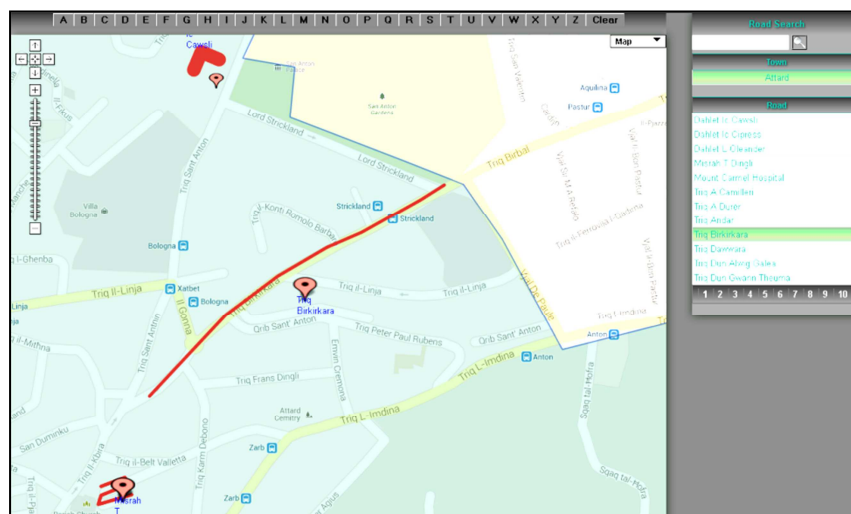
Pressing the 'Clear Map' will clear the map of all boundary and location plots on the map.

Pressing the 'Move Selected Marker' button will let the user interactively move the displayed icon (which must be clicked as described in the paragraph above) to new coordinates in case an erroneous entry was made.

Pressing the 'Create New Location' button will let the user drag and drop a new icon generated by the system to define a new location. When the Icon is dropped, the user is prompted to enter the name of the new location. Press Save to save this position or cancel to be able to place the marker in a new location.

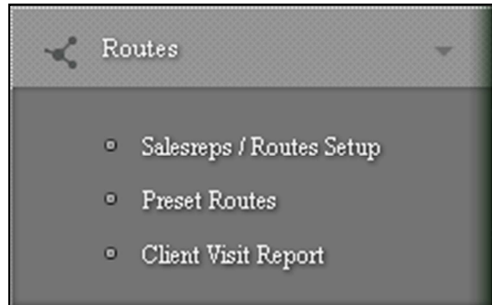
Pressing the 'Report' button will generate an Excel sheet with all defined locations grouped by town.

Towns / Roads



Again, the town is selected by means of the alphabetic buttons on top of the map. Clicking on the town on the right will display the roads in that town. Clicking on the road will display it on the map with a red line marking the road and an icon to make it visually easier to locate. The Road names are paged so no to clutter the display and pressing on the page number will navigate the user to the selected page. A search option is also included and part of the Road name text can be entered in the search box to find a particular road.

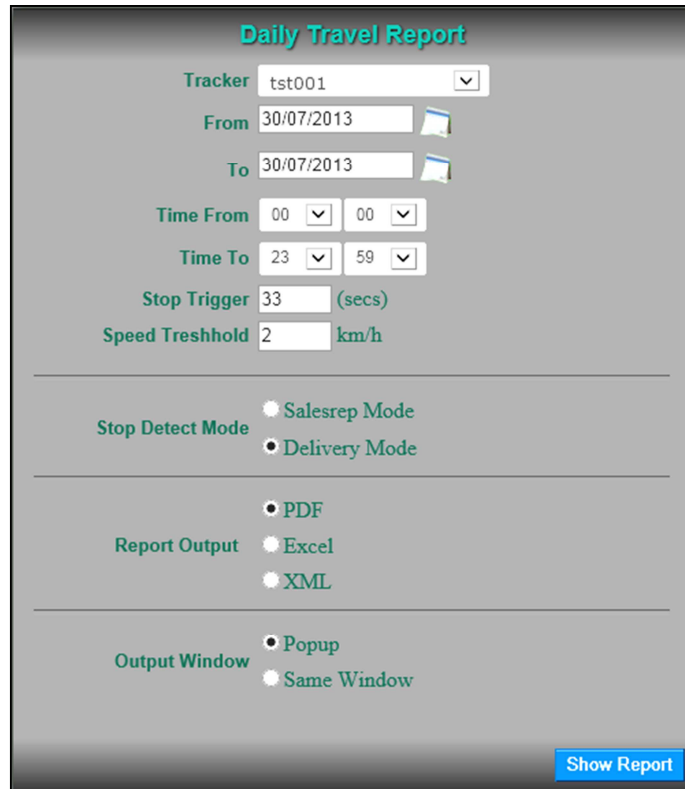
Menu – Routes



The Routes menu and its items are relevant only to advanced users operating vehicles under strict routes / timetables and are discussed under a separate manual.

Menu – Reports

Travel Report



Daily Travel Report

Tracker:

From:

To:

Time From:

Time To:

Stop Trigger: (secs)

Speed Treshold: km/h

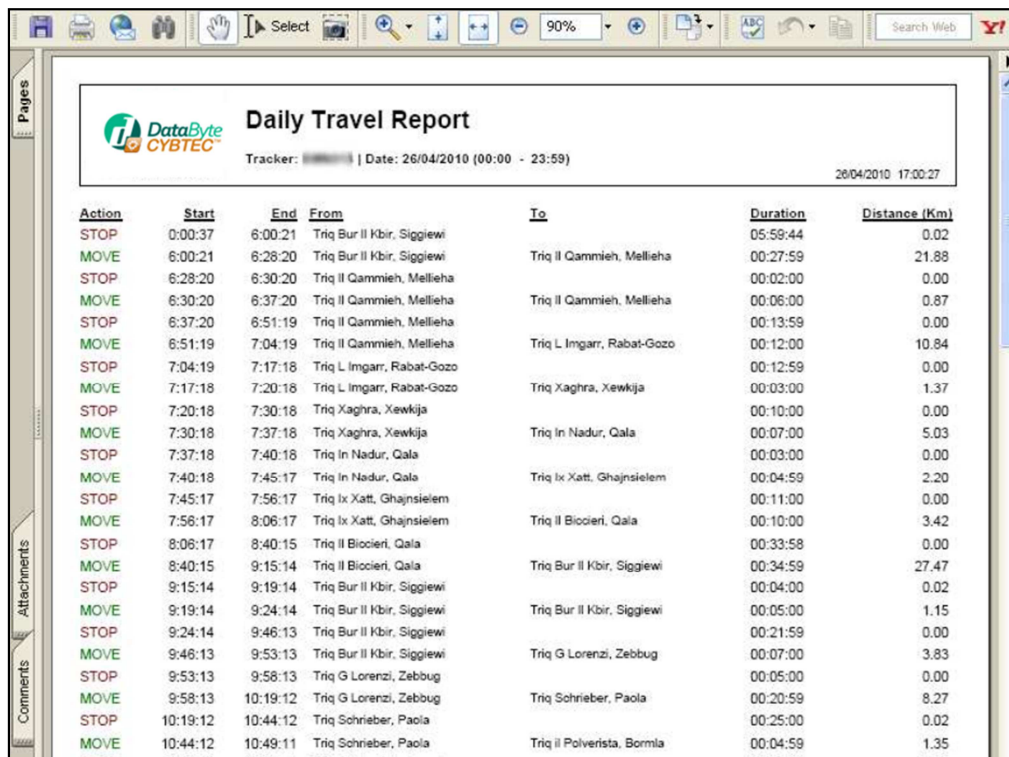
Stop Detect Mode: ☐ Salesrep Mode ☒ Delivery Mode

Report Output: ☒ PDF ☐ Excel ☐ XML

Output Window: ☒ Popup ☐ Same Window

[Show Report](#)

Select the tracker for which the travel report is required, the date, the start and end time. The stop trigger, speed threshold and Location range should only be tweaked in rare cases. Select the format of the report required (Excel or PDF). And click the show report button. The output in the report, as depicted in the next page gives Stoppages and travel intervals throughout the selected period together with the start and end of each transition and the address of the individual event. The duration and distance travelled of each event is also displayed.



Action	Start	End	From	To	Duration	Distance (Km)
STOP	0:00:37	6:00:21	Triq Bur Il Kbir, Siggiewi		05:59:44	0.02
MOVE	6:00:21	6:28:20	Triq Bur Il Kbir, Siggiewi	Triq Il Gammieh, Mellieha	00:27:59	21.88
STOP	6:28:20	6:30:20	Triq Il Gammieh, Mellieha		00:02:00	0.00
MOVE	6:30:20	6:37:20	Triq Il Gammieh, Mellieha	Triq Il Gammieh, Mellieha	00:06:00	0.87
STOP	6:37:20	6:51:19	Triq Il Gammieh, Mellieha		00:13:59	0.00
MOVE	6:51:19	7:04:19	Triq Il Gammieh, Mellieha	Triq L Ingarr, Rabat-Gozo	00:12:00	10.84
STOP	7:04:19	7:17:18	Triq L Ingarr, Rabat-Gozo		00:12:59	0.00
MOVE	7:17:18	7:20:18	Triq L Ingarr, Rabat-Gozo	Triq Xaghra, Xewkija	00:03:00	1.37
STOP	7:20:18	7:30:18	Triq Xaghra, Xewkija		00:10:00	0.00
MOVE	7:30:18	7:37:18	Triq Xaghra, Xewkija	Triq In Nadur, Qala	00:07:00	5.03
STOP	7:37:18	7:40:18	Triq In Nadur, Qala		00:03:00	0.00
MOVE	7:40:18	7:45:17	Triq In Nadur, Qala	Triq Ix Xatt, Ghajnsielem	00:04:59	2.20
STOP	7:45:17	7:56:17	Triq Ix Xatt, Ghajnsielem		00:11:00	0.00
MOVE	7:56:17	8:06:17	Triq Ix Xatt, Ghajnsielem	Triq Il Biocieri, Qala	00:10:00	3.42
STOP	8:06:17	8:40:15	Triq Il Biocieri, Qala		00:33:58	0.00
MOVE	8:40:15	9:15:14	Triq Il Biocieri, Qala	Triq Bur Il Kbir, Siggiewi	00:34:59	27.47
STOP	9:15:14	9:19:14	Triq Bur Il Kbir, Siggiewi		00:04:00	0.02
MOVE	9:19:14	9:24:14	Triq Bur Il Kbir, Siggiewi	Triq Bur Il Kbir, Siggiewi	00:05:00	1.15
STOP	9:24:14	9:46:13	Triq Bur Il Kbir, Siggiewi		00:21:59	0.00
MOVE	9:46:13	9:53:13	Triq Bur Il Kbir, Siggiewi	Triq G Lorenzi, Zebbug	00:07:00	3.83
STOP	9:53:13	9:58:13	Triq G Lorenzi, Zebbug		00:05:00	0.00
MOVE	9:58:13	10:19:12	Triq G Lorenzi, Zebbug	Triq Schrieber, Paola	00:20:59	8.27
STOP	10:19:12	10:44:12	Triq Schrieber, Paola		00:25:00	0.02
MOVE	10:44:12	10:49:11	Triq Schrieber, Paola	Triq Il Polverista, Bormla	00:04:59	1.35

Stoppage Report & Movement Report

The stoppage report gives the same data as the Travel report above but only the Stop events are displayed. Likewise, the Movement Report displays only the Movement Events.

Periodical Mileage Report



Kilometerage Report

Tracker:

From:

To:

Daily Start Time:

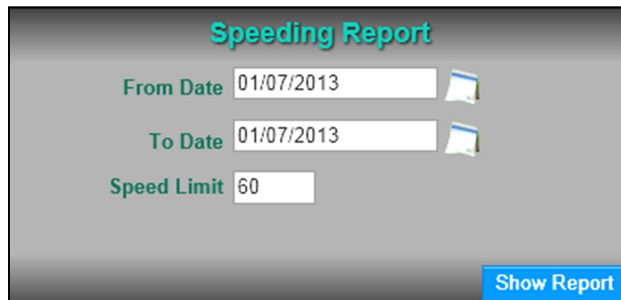
Daily End Time:

Report Output: ☒ PDF
☐ Excel
☐ XML

Output Window: ☒ Popup
☐ Same Window

This report maps out how many miles were done in a day by each tracker with a period total.

Speeding Report



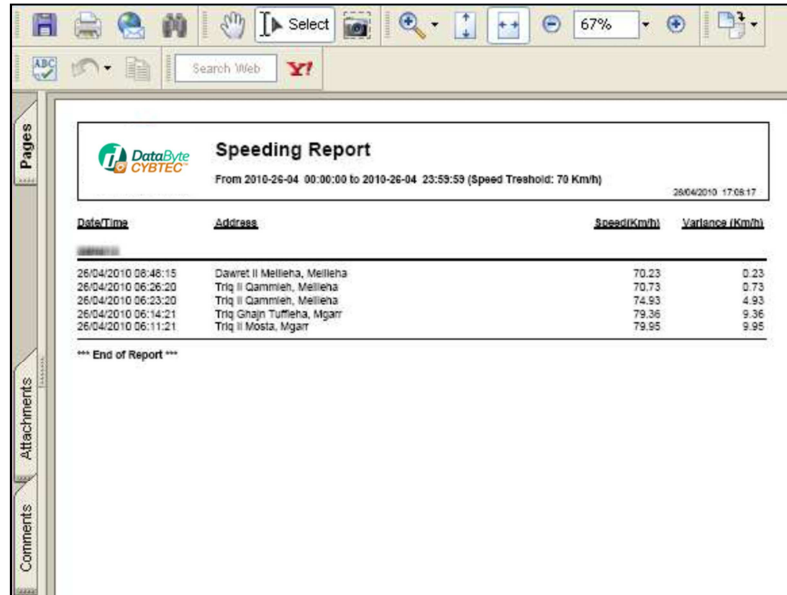
Speeding Report

From Date:

To Date:

Speed Limit:

Enter the date range and the Speed limit in km/h and press the Show Report button. All the vehicles that may have exceeded this speed limit will be displayed in the report together with the address, time and over speeding of the vehicle at that time.



Speeding Report
 From 2010-26-04 00:00:00 to 2010-26-04 23:59:59 (Speed Threshold: 70 Km/h) 26/04/2010 17:08:17

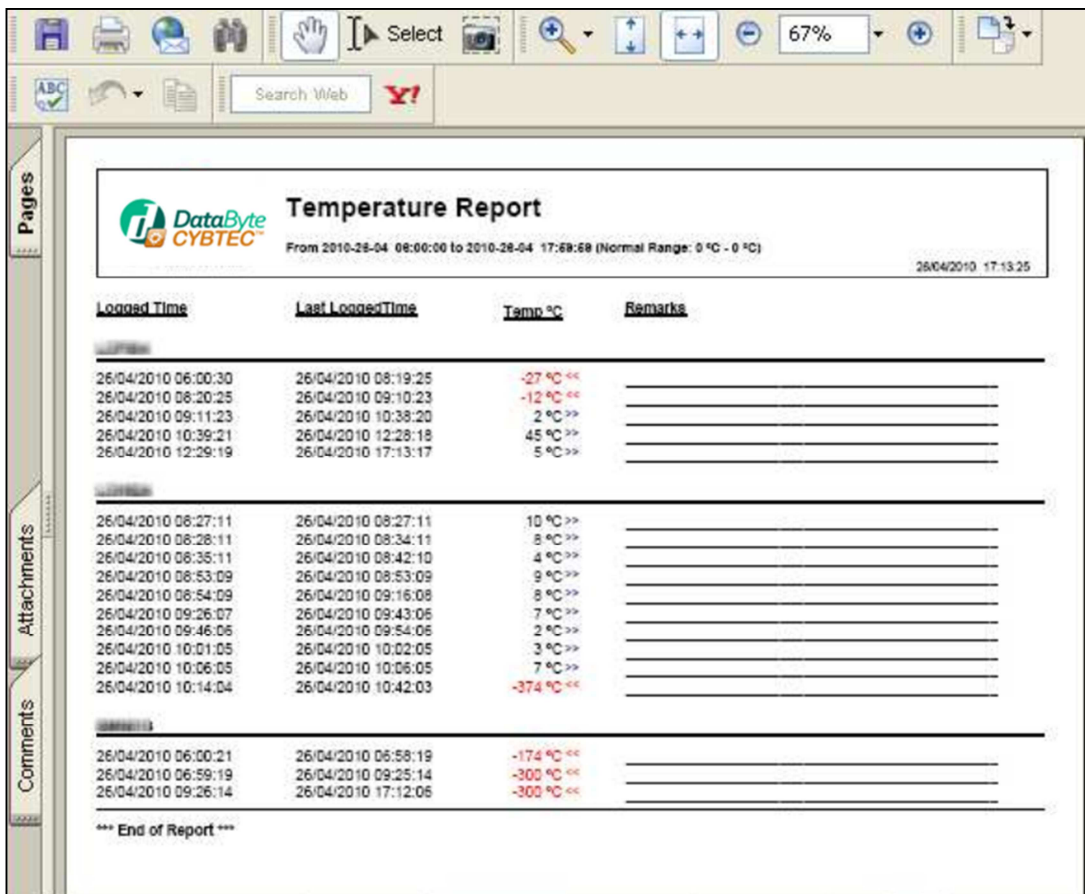
<u>Date/Time</u>	<u>Address</u>	<u>Speed(Km/h)</u>	<u>Variance (Km/h)</u>
26/04/2010 08:48:15	Dawret II Mellieha, Mellieha	70.23	0.23
26/04/2010 08:26:20	Triq II Gammieh, Mellieha	70.73	0.73
26/04/2010 08:23:20	Triq II Gammieh, Mellieha	74.93	4.93
26/04/2010 08:14:21	Triq Ghajn Tuffieha, Mgarr	79.36	9.36
26/04/2010 06:11:21	Triq II Mosta, Mgarr	79.95	9.95

*** End of Report ***

Temperature / Pressure / Volume Report

Depending on the sensors connected with the onboard tracker various reports can be extracted from the system.

Temperature / Pressure / Volume Reports Depending on the sensors connected with the onboard tracker various reports can be extracted from the system. Select the period required for the report and Click the show report button. Again, depending on the type of sensor installed with the tracker, data is reported as per the sample report hereunder.



Logged Time	Last Logged Time	Temp. °C	Remarks
26/04/2010 06:00:30	26/04/2010 08:19:25	-27 °C <<	
26/04/2010 08:20:25	26/04/2010 09:10:23	-12 °C <<	
26/04/2010 09:11:23	26/04/2010 10:38:20	2 °C >>	
26/04/2010 10:39:21	26/04/2010 12:28:18	45 °C >>	
26/04/2010 12:29:19	26/04/2010 17:13:17	5 °C >>	
26/04/2010 08:27:11	26/04/2010 08:27:11	10 °C >>	
26/04/2010 08:28:11	26/04/2010 08:34:11	8 °C >>	
26/04/2010 08:35:11	26/04/2010 08:42:10	4 °C >>	
26/04/2010 08:53:09	26/04/2010 08:53:09	9 °C >>	
26/04/2010 08:54:09	26/04/2010 09:16:08	8 °C >>	
26/04/2010 09:26:07	26/04/2010 09:43:06	7 °C >>	
26/04/2010 09:46:06	26/04/2010 09:54:06	2 °C >>	
26/04/2010 10:01:05	26/04/2010 10:02:05	3 °C >>	
26/04/2010 10:06:05	26/04/2010 10:06:05	7 °C >>	
26/04/2010 10:14:04	26/04/2010 10:42:03	-37.4 °C <<	
26/04/2010 06:00:21	26/04/2010 06:58:19	-17.4 °C <<	
26/04/2010 06:59:19	26/04/2010 09:25:14	-300 °C <<	
26/04/2010 09:26:14	26/04/2010 17:12:05	-300 °C <<	

*** End of Report ***

Notes

Cybtec is entirely developed by Data Byte Ltd. and we can offer any enhancements that our clients may require. Our resilient servers offer the most up to date backup systems and have a proven track record of over 99% uptime.